

MINI PTZ IP CAMERA

3MP Network Mini PTZ Dome Camera

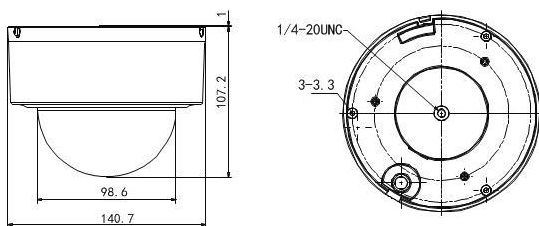
VNC-2380



Key Features

- 1/2.8" Progressive Scan CMOS
- 2048 x 1536
- 4X Optical Zoom
- DWDR
- Support IP66/IK10
- PoE(802.3af)
- Support RS485
- Support HiDDNS
- Support plug & play
- Support H.265

Dimensions



Technical Specifications

Model No	VNC-2380
Image Sensor	1/2.8" Progressive Scan CMOS
Min. Illumination	Fl.6, AGC On : Color : 0.05 lux, B/W : 0.01 lux
Max. Image Resolution	2048(H) × 1536(V)
Focal Length	2.8-12mm, 4x / Digital zoom : 16X
Angle of view	105-33.5 degree (Wide-Tele)
Aperture Range	F1.6 -F2.7
Focus Mode	Auto / Semiautomatic / Manual
DWDR	Support
S/N Ratio	≥ 52dB
Shutter Time	1/1-1/10,000s
White Balance	Auto / Manual /ATW/Daylight lamp/Sodium lamp
Day & Night	IR Cut Filter
Enhancement	3D DNR, HLC/BLC, Privacy Mask, AGC, ROI
Pan and Tilt Range	Pan: 0-350°; Tilt: 0°-90°
Pan and Tilt Speed	Pan Manual Speed:0.1°-60°/s,Preset Speed: 60°/s Tilt Manual Speed:0.1°-50°/s,Preset Speed: 50°/s
Detection	Intrusion detection, line crossing detection, audio exception detection, motion detection
Alarm Trigger	Intrusion detection,Line crossing,Motion detection Audio Exception Detection, Dynamic analysis Tampering alarm, Network disconnect, IP address conflict, Storage exception
Alarm Action	Preset, Recording, Relay output, Upload center Upload FTP, Email linkage
Audio input	1 built-in microphone; 1 audio input (Mic/Line in) 2-2.4V[p-p]; output impedance: 1kΩ, ±10%
Audio output	1 output, Line level, impedance: 600Ω
Ethernet	10Base-T / 100Base-TX, RJ45 connector
Frame Rate	50Hz:25fps(2048×1536), 25fps(1920×1080) 25fps(1280×960), 25fps(1280×720) 60Hz:30fps(2048×1536), 30fps(1920×1080) 30fps(1280×960), 30fps(1280×720)
Image Compression	H.264/H.265/MJPEG
Audio Compression	G.711ulaw/G.711alaw/G.726/MP2L2/G.722/PCM
Protocols	IPv4/IPv6, HTTP, HTTPS, 802.IX, QoS, FTP, SMTTP UPnP, SNMP, DNS, DDNS, NTP, RTSP, RTP, TCP UDP,IGMP, ICMP, DHCP, PPPoE
Simultaneous Live View	Up to 20 users
Mini SD Memory Card	Up to 128GB Micro SD/SDHC/SDXC card
Power	POE&12 VDC, Max. 8W
Working Temperature	-30°C ~ +65°C , humidity 90% or less
Protection Level	IP66, TVS 4,000V lightning protection
Dimensions	Φ140.7×107.2mm
Weight	950g